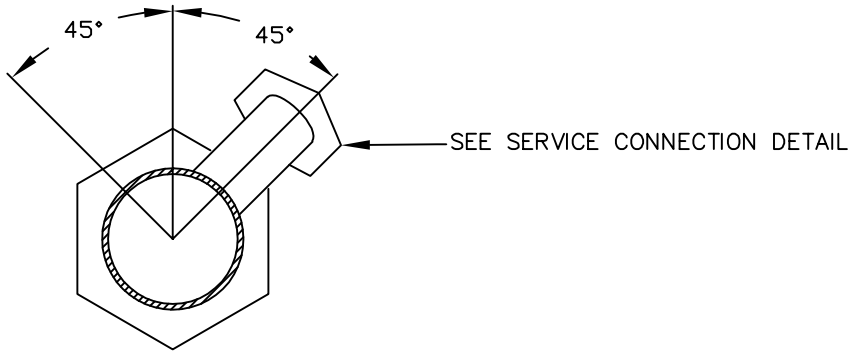
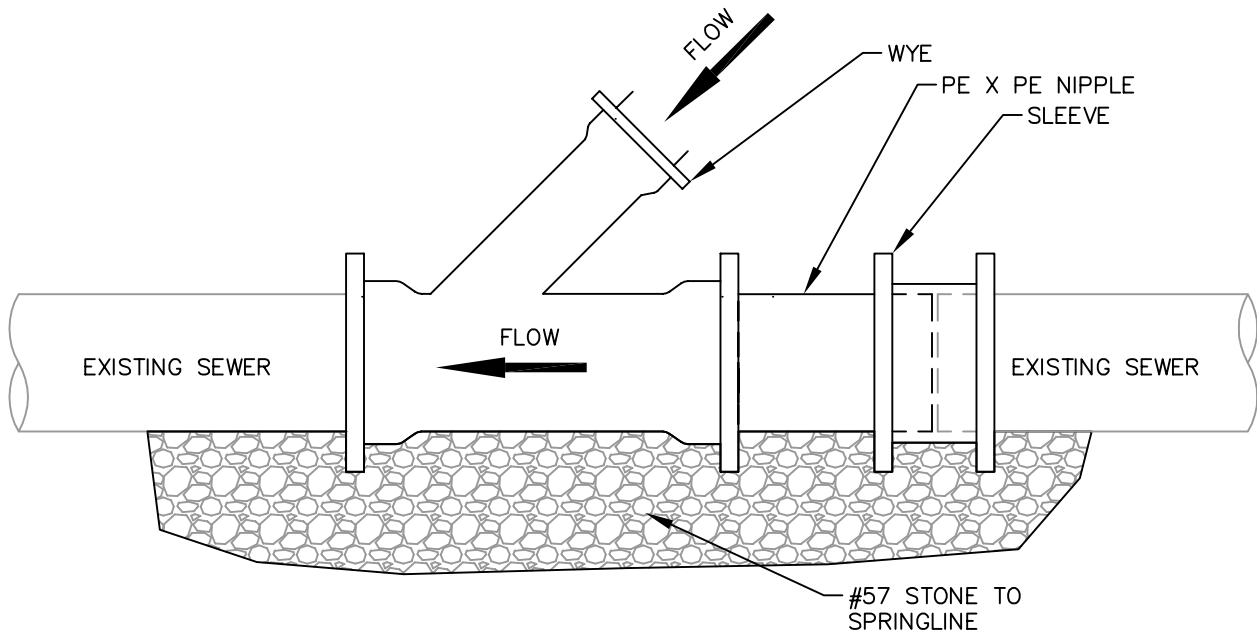


NOTE: FITTINGS SHALL BE THE SAME MATERIAL AS EXIST. SEWER



NOT FOR USE ON NEW CONSTRUCTION.

STANDARD DETAIL	
Metropolitan Sewerage District of Buncombe County, North Carolina	
SERVICE CONNECTION TO EXISTING SEWER	
APPROVED: FEBRUARY 25, 2010	2.07-01