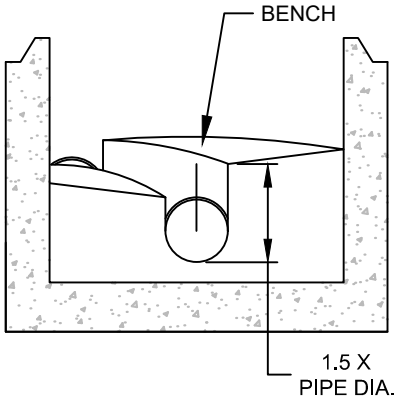


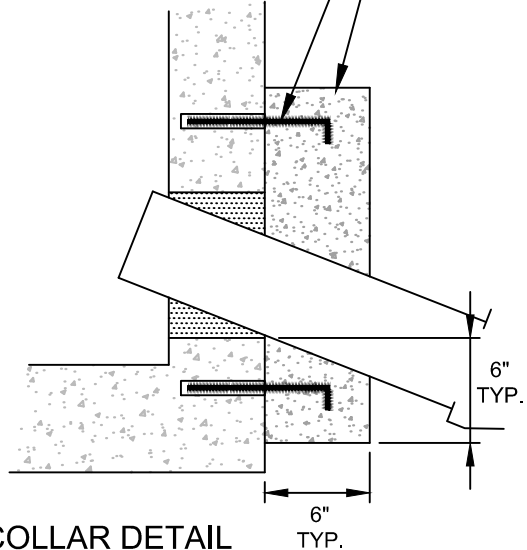
*INVERT CHANNELS FOR MANHOLES WHERE ALIGNMENT CHANGES SHALL BE "STEPPED" SUCH THAT THE BENCH HEIGHT ON THE OUTSIDE RADIUS OF THE CHANNEL IS 1.5 X THE DIA. OF THE PIPE

POURED CONC. COLLAR WITH FOUR #4 HOOKED DOWELS SET W/ APP'D EPOXY INTO M.H. WALL, TYP. EACH COLLAR

SECTION THRU HI-VELOCITY MANHOLE
N.T.S



BENCH DETAIL
N.T.S



COLLAR DETAIL
N.T.S

NOTE:
MANHOLE STEPS TO BE VERTICALLY IN LINE WITH "INVERT OUT" FOR PIPE 18" AND LESS. OVER 18" TO BE LOCATED IN LINE WITH BENCH.
FOR OMITTED NOTES SEE STANDARD MANHOLE DETAIL.

STANDARD DETAIL	
Metropolitan Sewerage District of Buncombe County, North Carolina	
HI-VELOCITY MANHOLE	
DATE APPROVED: MARCH 2017	2.11 - 09